



proge**CAD**



progeCAD NLM

User Guide

Rel. 14.1



Table of Contents

Table of Contents	2
Introduction	3
How to start	3
progeCAD NLM Server Installation	3
progeCAD NLM Server Registration	3
Licenses Addition and Activation.....	4
progeCAD Installation and Usage	4
How to obtain a Take-Away License.....	4
Server control from other PC	5
Server Management and Configuration Change	5
Access to Administration Panel	5
Administration Panel	5
License Manager.....	5
Server Settings.....	6

Introduction

The progeCAD NLM version (Network License Manager) allows to run concurrently a number of progeCAD copies corresponding to the number of licenses purchased on various workstations within the same network (LAN or Internet).

The NLM version consists of two parts:

- **progeCAD** clients, that can be installed on the unlimited number of workstations. The maximum number of progeCAD copies for concurrent use corresponds to the number of purchased licenses.
- The **NLM Server** software, that can be installed on any PC of the network, including progeCAD workstations. NLM Server manages licenses and assigns them to the users who want to use progeCAD. **It is recommended to install NLM Server on a PC with Internet access** for further registration and activation of licenses.

NLM Server, lacking GUI, can be monitored and managed from any PC on the network via the NLM Monitor software (included in the NLM Server Installation).

The NLM Server Management provides the possibility to add eventually purchased new licenses, remove licenses or monitor their state (availability, the user who works with the software, expiration, etc).

progeCAD users working within the network can immediately obtain a license from the Server, valid during the period of progeCAD, or they can request a Take-Away license that will allow them to work on a workstation out of this network for a necessary period of time (up to 30 days maximum).

Note: Each Take-Away license reduces the number of licenses available on the network by one for the Take-Away license duration period or till the moment of the license release.

How to start

progeCAD NLM Server Installation

To install NLM Server, start the file *nlmserver2014proeng.exe* on a network PC shared with all the PCs where progeCAD is going to be used, and follow instructions popped up on the screen.

progeCAD NLM Server Registration

It is necessary to register NLM Server to be able to use it. The NLM Monitor, installed together with NLM Server, will be automatically launched at the end of installation. It is also possible to launch NLM Monitor later on from the Start menu just clicking on NLM Server Monitor icon in Windows 8 or going to "All programs > progeCAD 2014 NLM Server Pro ENG > Start NLM Server Monitor" in previous versions of Windows.

Once opened, NLM Monitor will connect to NLM Server and ask to complete registration. Select the "OK" button and the NLM Server Registration Form will appear. When the form is filled out, press the "Activate" button, the program will try to carry out the Live registration, that is a quick registration via Internet. In case your PC is not connected to the Internet, it will be necessary to proceed with the e-mail registration following the offered instructions.

Licenses Addition and Activation

When the Server has been registered, there will appear the dialog allowing to activate purchased licenses (see figure on the side).

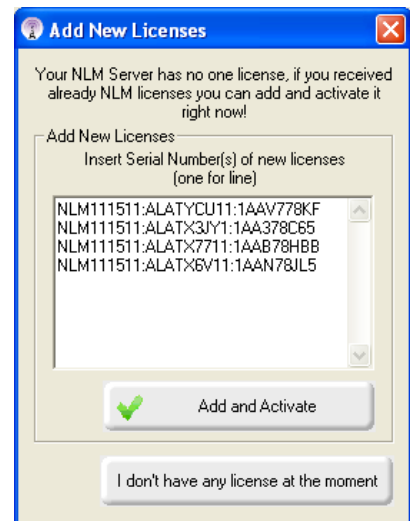
Every license has its own serial number starting with “NLM”.

If you already have license serial numbers, insert these serial numbers in the dialog box and press “Add and Activate”.

The activation method is similar to the Server registration method (Live when there is Internet access, otherwise via e-mail).

It is also possible to add and activate licenses later on from the Start menu.

Once licenses are added and activated, the Server is ready for use!



progeCAD Installation and Usage

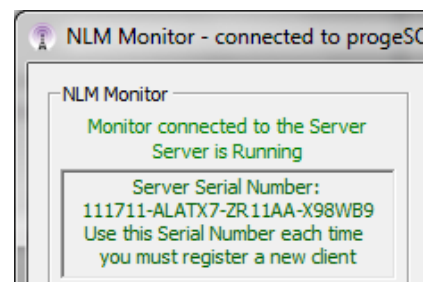
Install progeCAD on all the PCs where you are going to use the software and carry out registration. This operation consists of the following steps: Choose “Register” in the dialog box that pops up upon progeCAD Startup.

Insert the serial number that was assigned during the NLM Server registration. This number can be retrieved at any time through NLM Monitor, where it is visualized in the upper left corner of the window (see figure on the side).

Type Name, Surname and the company name.

Once registered, progeCAD is ready for use and the software will ask for the IP address of the PC where NLM Server is installed and for the clients port. If the procedure has been carried out correctly, progeCAD will make a license request to NLM Server. After verification of its availability, NLM Server will assign the license allowing the launch of the software.

*To learn the IP address of the server, execute the command **ipconfig** from the command line prompt on the computer with NLM Server.*

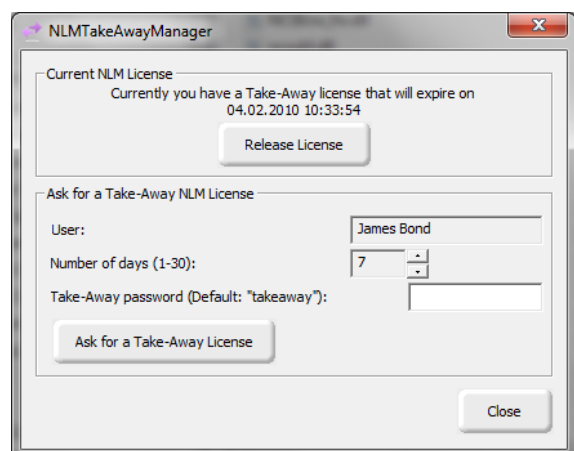


How to obtain a Take-Away License

You can work not only connected to NLM Server, but you can also obtain a license for some period of time that allows you to work disconnected from NLM Server. This type of license is called a Take-Away license.

To get a Take-Away license, you must launch the program “NLM TakeAway” that you can find in the progeCAD Center

placed in the Start Menu (going to “All programs > progeCAD 2014 Professional ENG > progeCAD Center 2014 Professional English” in Windows 7 and later).

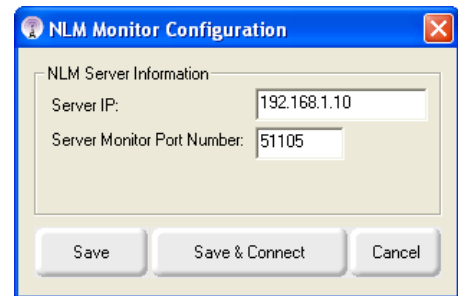


At the top of the window you will see your current license type (no license/connected to the server/Take-Away license). If you already have a Take-Away license and you are connected to the server, you can release the license before its expiration.

If you are connected to the server, you can obtain a Take-Away license, by choosing the number of days you want to work offline, and specifying the Take-Away password (set by your NLM Server Administrator).

Server control from other PC

It is possible to monitor and control the server from any other PC on the same network. For that you need to copy the NLMServerMonitor folder from the PC with NLM Server to the desired computer. Then run NLM Monitor and press the “Monitor Configuration” button. Indicate in the popped up dialog the IP address of the PC where NLM Server is installed and a configured port to communicate with Monitors.



Server Management and Configuration Change

Access to Administration Panel

Once NLM Monitor is connected to NLM Server, you can access Administration Panel pressing the “Administrate the Server” button and inserting the NLM Server Administration Password.

Upon the NLM Server installation the default password is created. It is possible to change it later on from Administration Panel.

If you forget the Administration Password, start NLM Monitor from the PC with NLM Server, making sure that in the NLM Monitor configurations the Server IP address is set to “127.0.0.1”. Then connect to the server, press the “Administrate the Server” button and proceed to the default password re-setting.

Administration Panel

Upon the password insertion the Administration Panel opens, offering two main tabs: **License Manager** and **Server Settings**

License Manager

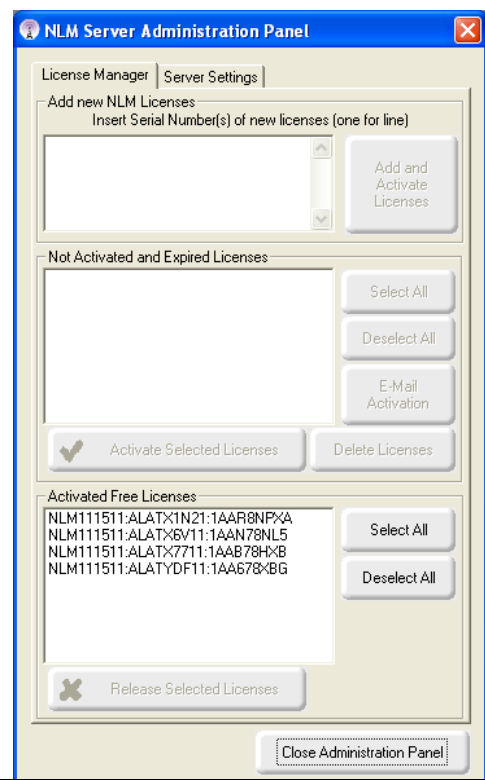
The License Manager dialog offers the following operations:

- **Add and activate new licenses**

To add new licenses, insert serial numbers of new licenses purchased in the appropriate field (one serial number at a line), then press the “Add and Activate Licenses” button. The Server will add new licenses and will proceed to their immediate activation.

- **Activate Licenses**

This list presents non-activated licenses; the activation of these licenses was not possible at the moment when they were added.



To activate these licenses, it is necessary to select (all licenses or some of them according to your need) and press the “Activate Selected Licenses” button. If the Server finds Internet connection, it will immediately proceed to the automatic activation, otherwise you will be asked to proceed with the e-mail activation.

- **License E-mail Activation**

Once the e-mail activation requested, you will receive an e-mail response with an activation file attached. Pressing the “E-Mail Activation” button, the dialog box will appear. Select the file received as attachment to the e-mail.

- **Delete non-activated licenses**

You can delete non-activated or expired licenses, that you do not want to activate any more, simply selecting and pressing the “Delete Licenses” button.

- **Release Active Licenses**

This list enumerates active licenses currently not in use, and consequently available for being released. This operation is necessary when you want to re-activate the licenses on another Server.

Note: To release licenses correctly, the Server must be connected to the internet. This operation is not provided via e-mail.

If no Internet access is available, you can still proceed with the release but in this case the licenses will be simply removed from the server without being actually released. As a result new eventual activations will be generating an alert message.

Server Settings

The NLM Server Settings dialog allows to control and modify all the options and settings in regard to the NLM Server functionalities, among which:

- **Clients Port Number**

The port number to communicate with network clients. When a port number happens to be changed, the users eventually connected to the server will become disconnected and they would have to insert a new port number in their settings.

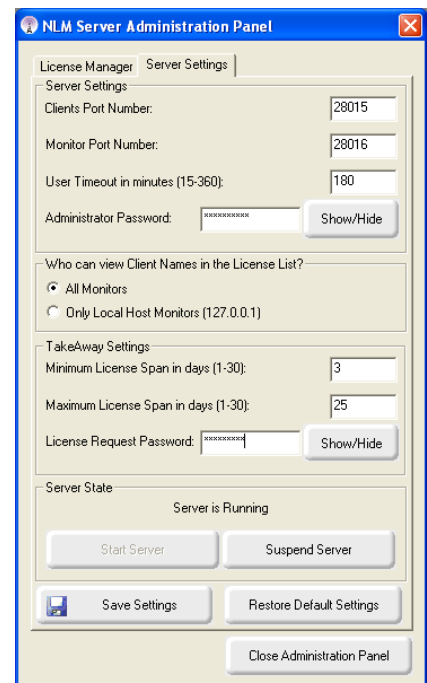
If the change of a port number fails (for example, it is already used by some other program), then NLM Server will turn back to the old port.

- **Monitor Port Number**

The port number to communicate with network Monitors. When a Monitor Port Number happens to be changed, all the Monitors connected to the server will become disconnected and a new port number would have to be inserted in the configuration.

If the change of a port number fails (for example, it is already used by some other program), then NLM Server will turn back to the old port.

In any way, the Monitor, where the port has been changed, will automatically set a new value in its configuration. So, in case the change of a port is successful, just press the “Connect to the Server” button and you will be connected to the server using the new port. Meanwhile the port number on all other Monitors will have to be changed manually in “Monitor Configuration”.



Note: If the connection to the server was not possible, the server probably failed to start on a new port and so reset the previous value. You should indicate the old port number in "Monitor Configuration". In this way all other Monitors will not have to present any modification.

- **User Timeout in minutes**

Set a time limit (in minutes) when the license is conserved even if the communication from the client is lacking (during this period the user can work locally even without access to the Server).

The higher timeout value, the better stability for the users (work longer in case of net malfunctioning), but at the same time the worse flexibility (if some user fails to communicate with the server, has no way to release his license, so no other user will be able to take this license).

- **Administrator Password**

The password necessary to access Administration Panel.

Attention! When changing password, you are not asked for confirmation of an inserted password, so it is strongly recommended, before saving the new settings, to verify if the new password corresponds to the one you were intending, pressing the "Show/Hide" button for its visualization.

- **Who can view Client Names in the License List?**

If you select the "All Monitors" option, all Monitors will be able to see Names and Surnames of those users who possess the corresponding licenses.

With the "Only Local Host Monitors" option the users' names and surnames will be hidden to all Monitors, except for one started on the PC where the Server is installed and connected to the Server with the localhost address (127.0.0.1).

- **Minimum License Span in days**

The minimum number of days for granting a Take-Away license

- **Maximum License Span in days**

The maximum number of days for granting a Take-Away license

- **License Request Password**

The password necessary to obtain a Take-Away license from the Server.

Attention! When changing password, you are not asked for confirmation of an inserted password, so it is strongly recommended, before saving the new settings, to verify if the new password corresponds to the one you were intending, pressing the "Show/Hide" button for its visualization.

- **Start Server / Suspend Server**

The command to start or suspend the Server. As far as Users are concerned, to suspend the Server is equivalent to switch it off. All Users will be disconnected, and the Server will stop functioning on the clients port, becoming inaccessible (the users who were connected will be able to continue working even without Server for the time set by Timeout); as far as Monitors are concerned, nothing will be changed and they will continue functioning in the same mode.

Starting the server the clients port will be reset.

- **Restore Default Settings**

Turns the settings (except the two passwords) back to the default values.

Attention! The Restore Default Settings function only modifies the values in the corresponding fields, but does not save them! To save the default settings, it is necessary to use the save settings command. In case you prefer to reject the default settings, just close Administration Panel down without saving.

- **Save Settings**

Saves all modified settings and closes down Administration Panel.