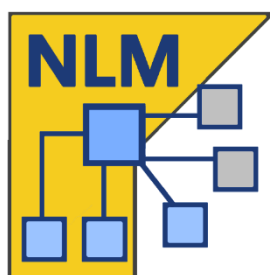




proge**CAD**



proge**CAD NLM**

# **User Guide**

Rel. 25.1

---

# Table of Contents

<b>Table of Contents .....</b>	<b>2</b>
<b>Introduction .....</b>	<b>3</b>
<b>How to start .....</b>	<b>3</b>
progeCAD NLM Server Installation .....	3
progeCAD NLM Server Registration .....	3
License Addition and Activation .....	4
progeCAD Installation and Usage .....	4
How to obtain a Take-Away License.....	4
Server control from other PC .....	5
<b>Server Management and Configuration Change .....</b>	<b>5</b>
Access to Administration Panel .....	5
Administration Panel .....	5
Licenses Manager .....	6
Not active licenses.....	6
Server settings .....	7
TakeAway settings.....	9
RegData .....	9
Misc .....	9
Handled Extra Serials.....	10
Groups .....	11
Migration.....	11
<b>Migrating NLM Server .....</b>	<b>12</b>
<b>Proxy configuration.....</b>	<b>12</b>
<b>Appendix A .....</b>	<b>13</b>

## Introduction

The progeCAD NLM version (Network License Manager) allows to run concurrently a number of progeCAD copies corresponding to the number of purchased licenses on various workstations within the same network (LAN or Internet\*).

The NLM version consists of two parts:

- **progeCAD** clients, that can be installed on the unlimited number of workstations. The maximum number of progeCAD copies for concurrent use corresponds to the number of purchased licenses.
- The **NLM Server** software, that can be installed on any PC of the network, including progeCAD workstations. NLM Server manages licenses and assigns them to the users who want to use progeCAD. **It is recommended to install NLM Server on a PC with Internet access** for further registration and activation of licenses.

**Notice that you need only one installation of NLM Server to set your progeCAD network environment and manage your NLM licenses.**

NLM Server, lacking GUI, can be monitored and managed from any PC on the network via the NLM Monitor software (included in the NLM Server Installation).

The NLM Server Management provides the possibility to add new purchased licenses, remove licenses or monitor their state (availability, the user who works with the software, expiration, etc).

progeCAD users working within the network can immediately obtain a license from the Server to work with the software as long as it is required, or they can request a Take-Away license that will allow them to work on a workstation out of the network for a period of time (up to 30 days maximum).

*Note: Each Take-Away license reduces the number of licenses available on the network by one for the Take-Away license duration period or till the moment of the license release.*

*\*To be used through Internet. It's required to set up port forwarding on your firewall*

## How to start

### progeCAD NLM Server Installation

To install NLM Server, start the file *nlmserverproeng.exe* on a network PC reachable by all the PCs where progeCAD is going to be used, and follow the guided procedure of NLM Server installation.

### progeCAD NLM Server Registration

NLM Server must be registered before its use. The NLM Monitor, installed together with NLM Server, is automatically launched at the end of the installation procedure. Otherwise you can launch NLM Monitor either from the Start menu or by clicking the Icon created on Desktop. Once opened, NLM Monitor connects to NLM Server and prompts to complete registration. Pressing the *OK* button, the NLM Server Registration Form shows up. When the form is filled out, press the *Activate* button, the program tries to proceed to Live registration, that is a quick registration via Internet. In case your PC is not connected to the Internet, it will

be necessary to proceed with the e-mail registration method following the instructions of the guided procedure.

## License Addition and Activation

When the Server has been registered, a dialog box shows up allowing to activate purchased licenses (see figure on the side).

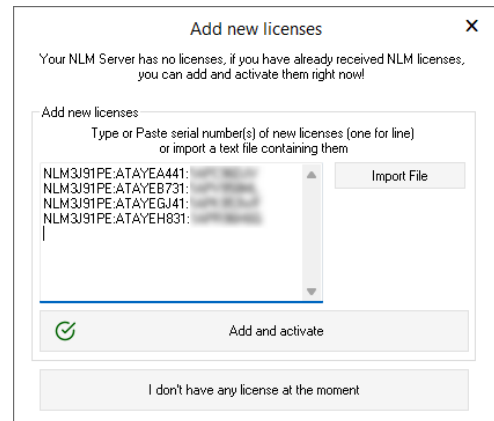
Every license has its own serial number starting with “NLM”.

If you already have license serial numbers, insert these serial numbers in the dialog box and press *Add and Activate*.

The activation method is similar to the Server registration method (Live when there is Internet access, otherwise via e-mail).

You can also add and activate licenses at a later date by *Administrate the server* button -> *Licenses manager* tab -> *Add new licenses*. See [Licenses Manager](#) section for more details.

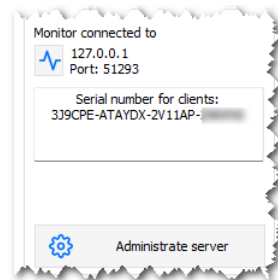
Once licenses are added and activated, the Server is ready for use!



## progeCAD Installation and Usage

Install progeCAD on all the PCs where you are going to use the software and perform software registration. This operation consists of the following steps:

- Choose *Register* in the dialog box that shows up on progeCAD start.
- Insert the serial number that was assigned to NLM Server during the NLM Server registration. This number can be retrieved at any time through NLM Monitor, where it is displayed in the left side of the window (see figure on the side). If the client’s automatic configuration is enabled through NLM Server, this step can be omitted by accepting the server prompt that shows up during this procedure.
- Complete the activation by filling out the proposed form.
- Once registered, progeCAD is ready for use. The software asks for the IP address of the PC where NLM Server is installed and for the clients port, if these data are not detected automatically. If the procedure has been carried out correctly, progeCAD will make a license request to NLM Server. After verification of a license availability, NLM Server will assign the license allowing to start the software.



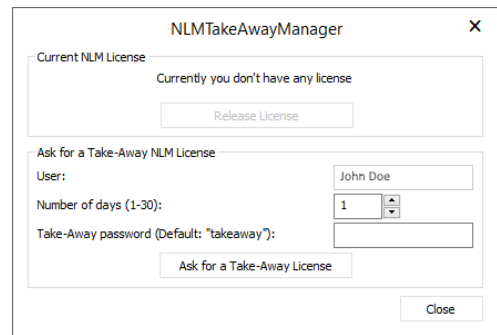
If you have to set up multiple clients, it may be useful to use the *regdata.dat* facility (available only from version 2019 onward). For details see [Regdata](#) section.

To learn the IP address of the server, execute the command *ipconfig* from the command line prompt on the computer with NLM Server.


## How to obtain a Take-Away License

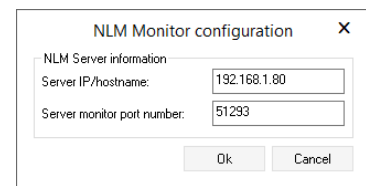
You are not limited to work solely connected to NLM Server. You are able to take a license out of the network to work for some period of time disconnected from NLM Server. This type of license is called a Take-Away license.

To get a Take-Away license, launch the program *NLM TakeAway* that you can find in progeCAD Center available from the Start Menu on the client computer. Go to *Utility -> NLM TakeAway*. At the top of the window you can see your license current status (no license/connected to the server/Take-Away license). If you already have a Take-Away license and you are connected to the server, you can release the license before its expiration. If you are connected to the server, you can obtain a Take-Away license, by choosing the number of days you want to work offline, and specifying the Take-Away password (set by your NLM Server Administrator).



### Server control from other PC

It is possible to monitor and control the server from any other PC on the same network. To do that, copy the NLMServerMonitor folder from the PC with NLM Server to the desired computer. Then run NLM Monitor and press the connection button . Indicate in the showed up dialog box the IP address of the PC where NLM Server is installed and the configured port to communicate with Monitors.



## Server Management and Configuration Change

### Access to Administration Panel

Once NLM Monitor is connected to NLM Server, you can access Administration Panel pressing the *Administrate the Server* button and inserting the NLM Server Administration Password.

Upon the NLM Server installation the default password is created. It is possible to change it later from Administration Panel.

If you forget the Administration Password, start NLM Monitor from the PC with NLM Server, making sure that in the NLM Monitor configurations the Server IP address is set to "127.0.0.1". Then connect to the server, press the *Administrate the Server* button and proceed to the default password re-setting.

### Administration Panel

Once the password has been inserted, the Administration Panel opens up offering several tabs: **License Manager, Not active licenses, Server settings, TakeAway settings, RegData, Misc, Handled Extra Serials, Groups and Migration.**

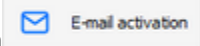
## Licenses Manager

The License Manager dialog box offers the following operations:

- **Add new licenses**

To add new licenses, insert the serial numbers of your purchased new licenses in the relative field (one serial number per line), then press the *Add and Activate Licenses* button. If there is an Internet connection, the Server will add new licenses and will proceed to their immediate activation.

In the absence of an internet connection, please proceed by e-mail following the instructions of the guided procedure. After sending an email, you receive an automated reply with an activation file attached.

Press the *E-Mail Activation* button , a dialog box shows up, select the file you've received by e-mail and complete the activation process.

- **Release Active Licenses**

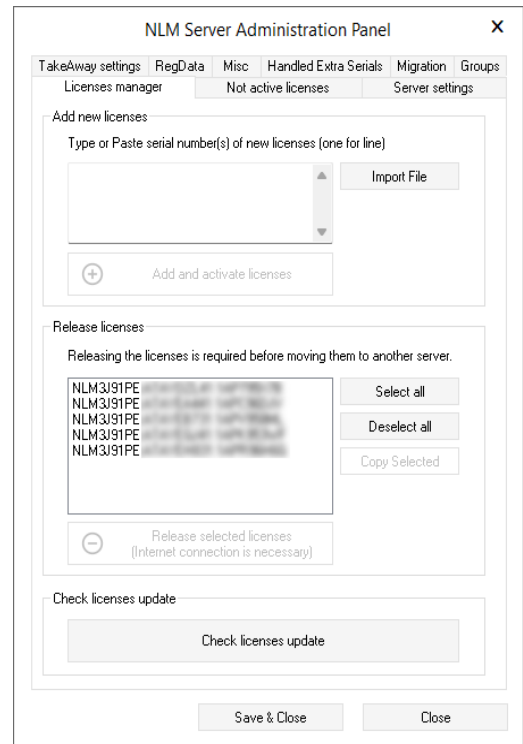
In this box you will find active licenses currently not in use and available for the Release procedure. This procedure is necessary when you need to re-activate licenses on another Server.

Note: To release licenses correctly, the Server must be connected to the Internet. This procedure cannot be performed via email.

If no Internet access is available, you will be able to continue the licenses release procedure, however, these licenses will be simply removed from the server, and NOT released.

- **Check licenses update**

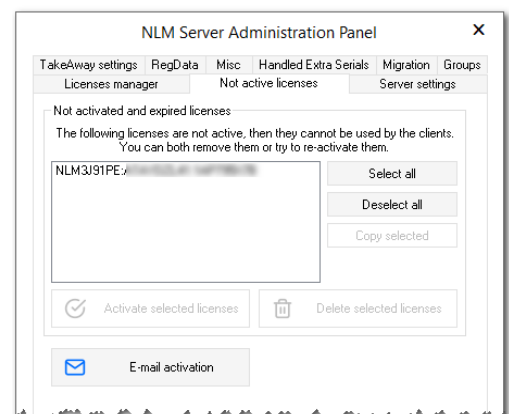
Check if the licenses are eligible to be updated to a newer version (for example due to an iCARE subscription). If they are, they are automatically updated to the new version. An internet connection is required.



## Not active licenses

- **Not activated and expired licenses**

This box lists licenses that cannot be used by clients because of their status (expired and/or not active). You can try to activate these licenses: select all licenses or some of them (according to your needs) and press the *Activate Selected Licenses* button. If the Server finds Internet connection, it will immediately proceed to the automatic activation, otherwise you will be prompted to proceed with the e-mail activation.



You can remove from this list non-activated or expired licenses, by selecting and pressing the *Delete selected licenses* button.

## Server settings

The NLM Server Settings dialog box allows to control and modify all the options and settings relating to the NLM Server functionalities, among which:

- **Clients Port Number**


The port that NLM Server uses for communication with network clients. If a port number gets changed and there are users connected to the server then these users will become disconnected and will have to insert a new port number in their settings to continue working with the software.

If the port number change fails (for example, it is already used by some other program), NLM Server gets back to the old port number.

- **Monitor Port Number**

The port that NLM Server uses for communication with network Monitors. If a Monitor Port Number gets changed, all the Monitors connected to the server will become disconnected and you will need to configure a new port number.

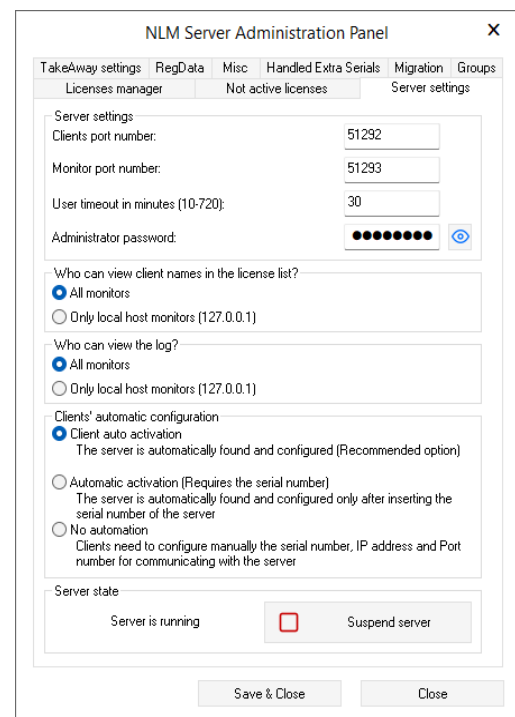
If the port number change fails (for example, it is already used by some other program), NLM Server gets back to the old port number.

The Monitor with the changed port number automatically sets a new value in its configuration. So when the change of a port is successful, you simply press the connection button  to be connected to the server using a new port. However, the port number on all the other Monitors need to be changed manually.

Note: If it is not possible to establish a connection to the server, it is likely that the server failed to start a connection using a new port and reset the previous value. In this case you should indicate the old port number. All other Monitors do not need any modification. Another reason of the connection failure can be missing open port in the Firewall. NLM Server automatically opens the firewall ports during the setup. If ports are changed, this operation must be performed manually.

- **User Timeout in minutes**

Set a time limit (in minutes) which allows to maintain a license even when the system is idle (e.g. the user left progeCAD open without working with the software or a network failure occurred). During the Timeout period the user can work locally even without access to the Server. Even when the software is not in use, the license will be maintained for the whole Timeout period. The higher timeout value, the stabler the work of users (they can work longer in case of net malfunctioning and their license is preserved when they take breaks, yet it reduces flexibility (if a user has no way to



release his license due to a network failure or simply doesn't release it leaving the software open, the license won't return to the Server and no other user will be able to take this license).

- **Administrator Password**

The password to access the Administration Panel.

Attention! When changing your password, you are not prompted for confirmation of a newly inserted password, so it is strongly recommended, before saving your new settings, to verify if your new password corresponds to the one you intended, by pressing the Show/Hide button for its visualization.

- **Who can view Client Names in the License List?**

If you select the *All Monitors* option, all Monitors will be able to see Names and IPs of those users who possess the corresponding licenses.

With the *Only Local Host Monitors* option the users' names and IPs will be hidden to all Monitors, except the one Monitor which is started on the PC with the Server and connected to the Server with the localhost address (127.0.0.1).

- **Who can view the log?**

If you select the *All Monitors* option, all Monitors will be able to see an access log.

With the *Only Local Host Monitors* option, the access log information will be seen only by the Monitor started on a PC with the Server and connected to the Server with the localhost address (127.0.0.1).

No other Monitor will have access to this information.

- **Clients' automatic activation**

- *Client auto activation*

Within a local network, at the moment of activation clients send a broadcast message to locate the NLM Server. If found, they automatically configure themselves.

- *Automatic activation (Requires the serial number)*

Like the above configuration, clients are automatically configured, but the server serial number is requested to start the activation process

- *No automation*

Serial number, IP and Port must be inserted manually to perform the client activation.

Note: for both *Client auto activation* and *Automatic activation*, broadcast messages must be enabled on your local network.

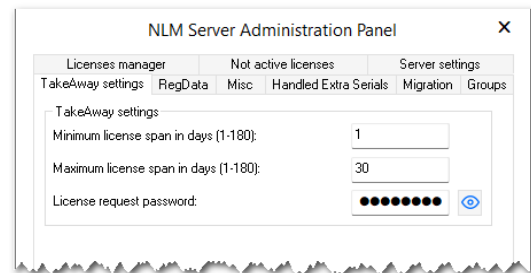
- **Start Server / Suspend Server**

The command to start or suspend the Server. As far as Users are concerned, to suspend the Server is equivalent to switch it off. All Users will be disconnected, and the Server will stop functioning on the clients port, becoming inaccessible (the users who were connected will be able to continue working even without Server for a period of time set by Timeout); as far as Monitors are concerned, nothing will be changed and they will continue functioning in the same mode.



## TakeAway settings

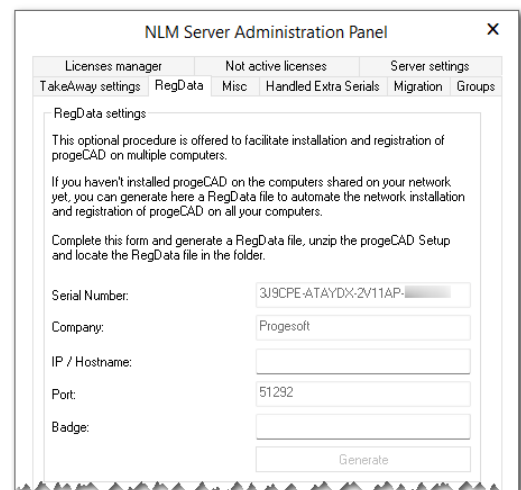
- **Minimum License Span in days**  
The minimum number of days for granting a TakeAway license
- **Maximum License Span in days**  
The maximum number of days for granting a TakeAway license
- **License Request Password**  
The password necessary to obtain a TakeAway license from the Server.



## RegData

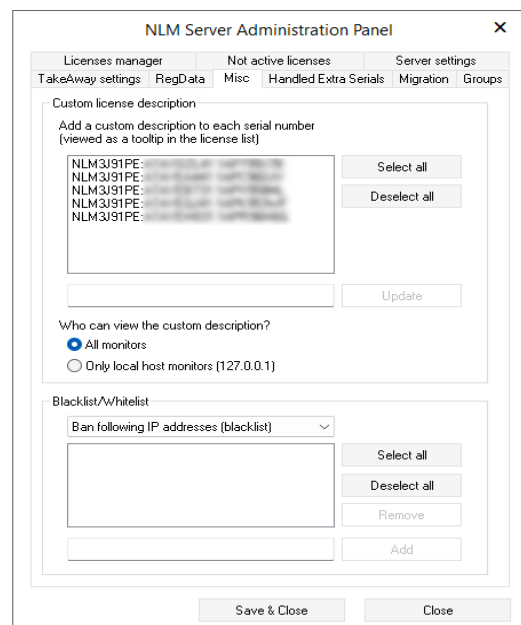
**(This option is available only from progeCAD 2019 onward)**

The RegData tab of the Administration Panel allows you to generate a file (regdata.dat) that facilitates installation and activation of progeCAD when dealing with multiple clients set up. Indicate the IP of the machine where NLM Server is installed (it must be an IP reachable from all the clients workstations) and click the Generate button. Locate the regdata.dat file together with the setup files in a shared folder, access that folder from every workstation where you want to install progeCAD and run the setup. After installation, progeCAD will be automatically activated to work with NLM Licenses tied to that server.



## Misc

The Misc Tab includes a couple of features that sometimes may be handy. In the "Custom license description" section you can add some text to a serial number that will be displayed as a tooltip when you hover the cursor over that serial number in the NLM Server Monitor. You may choose if to display this comment to anyone or only to those who have access to the server (usually the Administrator). To add a comment, put the text in the lower text input box and press the "Update" button on the right. If, for any reason, you don't want some progeCAD copy to have access to licenses, you can block the IP of the machine where this progeCAD copy is located. Once IP is blocked, the progeCAD copy on that

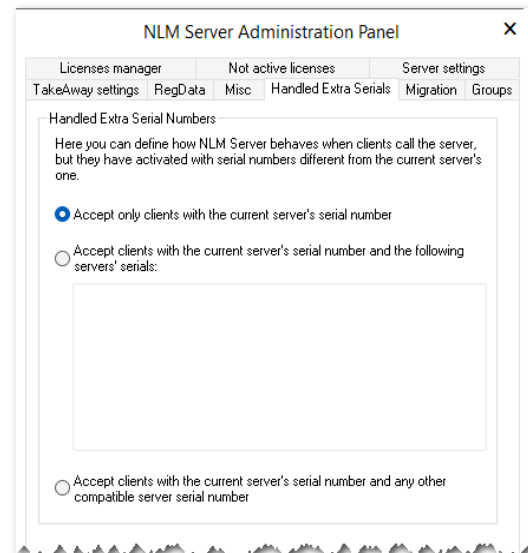


computer won't be able to take licenses. To block an IP, go to the Blacklist section and type this IP in the lower text input box, then press the "Add" button.

## Handled Extra Serials

*(This option is available only from progeCAD 2022 onward)*

In this tab, you can define how progeCAD NLM Server behaves in case of clients activated with a serial number different from the one of the NLM Server itself. The more common scenario is when you migrate the NLM Server into another PC/Server (for more details, see "[Migrating NLM Server](#)" chapter). Since a new activation is required, you'll get a new serial number, while clients still have the previous one. In this case, each client must be re-activated in order to match the new serial number. By starting from version 2022, this procedure can be made almost automatically from this dialog, by letting the NLM Server handle other serial numbers. These are the options:



- Accept only clients with the current server's serial number**

This is the default behavior, requests from clients having serial numbers other than the NLM Server's one will be rejected.
- Accept clients with the current server's serial number and the following servers' serials:**

By checking this option, you can specify one or more serial numbers the NLM Server will accept, besides its own. Once a progeCAD asks for a license with one of those serials, it will automatically re-activate itself with the server's serial number. When migrating the NLM Server, you could specify the serial number of the NLM Server you're dismissing.
- Accept clients with the current server's serial number and any other compatible server serial number**

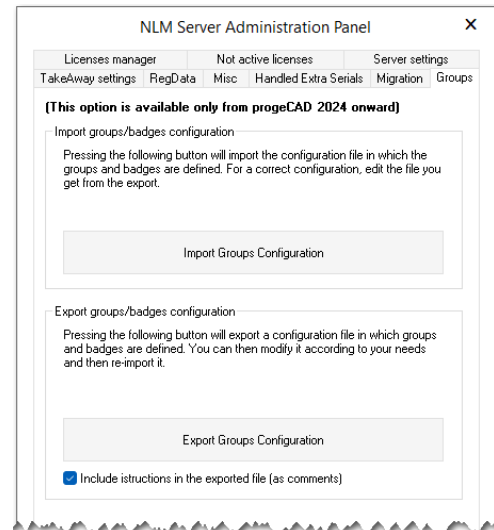
This is like the previous one, except for the fact that every NLM Server serial number valid for this product will be accepted.

**IMPORTANT:** second and third options work ONLY with progeCAD version 2022 or greater. For previous versions, in the case of migration, a re-activation of the client is still required.

## Groups

***(This option is available only from progeCAD 2024 onward)***

This section is reserved only for customers who need to reserve licenses for individuals or workgroups and who have some experience with configuration files in INI format. For normal use of the NLM server it is not necessary to access this configuration page. Given the peculiarity of this section, please refer to appendix A for a detailed description of the topic.



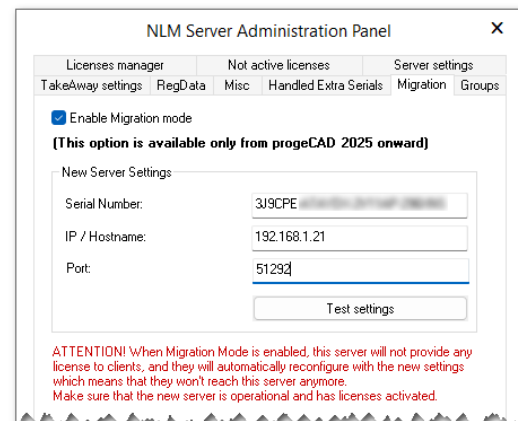
## Migration

***(This option is available only from progeCAD 2025 onward)***

The Migration panel allows you to automate client configuration in the case of migration of the NLM server from one server to another. Clients are not simply redirected to the new server, but are re-configured so that they are managed by it from that moment on.

- **Enable Migration mode**  
The first step to take is to click on this option to enable the subsequent fields
- **Serial number**  
Indicate the serial number of the new server
- **IP/Hostname**  
Indicate the IP address or Hostname of the new server
- **Port**  
Indicate the port that the new server uses to respond to clients

If the licenses had not been previously released, the old server will still not provide them to the clients anymore.



# Migrating NLM Server

To migrate the server you need:

- Install NLM Server on a new machine and activate it.
- Connect to the old server and release all available licenses (see [License Management](#)).

It is now possible to proceed with the transfer of the NLM server in two different ways:

1. progeCAD 2025 version (both Clients and Server)

- Enable and configure the migration mode (refer to [Migration](#))

As the progeCADs arrive at the old Server they will automatically be reset to point to the new one. Once all clients have been reconfigured, the old Server can be decommissioned.

2. Previous progeCAD 2025 versions

- Uninstall NLM Server
- Repeat registration for all Clients by going to progeCAD Center > Register progeCAD. If the Server is located on the same LAN and the automated registration procedure option is enabled, the registration process will be through in few clicks. If the automated registration procedure option is disabled, during the registration procedure you will be prompted to indicate the new serial number associated with NLM Server. On progeCAD start, not finding the old IP address and Port number (progeCAD stores the previous IP and Port), the program will ask for a new IP address. These data, IP address and Port number, can be changed at any moment from progeCAD Center -> Utility -> NLM Settings.

## Proxy configuration

If your NLMServer software runs on a PC/Server that accesses the Internet through a proxy, you should configure NLMServer to be able to use it. It is enough to create a plain text file, named proxy.cfg, which will contain four lines. The text file must contain the following pieces of information, one piece of information per line: Proxy User, Proxy Password, Proxy IP, Proxy Password.

The example of a proxy.cfg file:

```
PROXYUSER123
PROXYPWD314
192.168.1.200
8080
```

This file must be located in the main program folder, usually *C:\Program Files (x86)\PSOFT\progeCAD NLM Server Professional ENG*

**IMPORTANT:** Although NLMServer doesn't require the Internet for functioning, if Internet connection is available, it will speed up the activation/upgrade of your licenses. The Internet is also required in case of migration of the server, when you want to release the activated license(s) without having to contact the ProgeSOFT support team.

## Appendix A

**Important: if you want to create working groups, read the manual very carefully. Incorrect configurations can lead to limitations in the use of the licenses themselves or undesirable behaviour in issuing licenses.**

### Setting up and managing workgroups

The generation as well as any modification of groups of NLM licenses can be divided into 3 steps:

1. Generation of the file in INI format showing the current configuration
2. Editing the exported INI file
3. Importing the modified configuration

#### 1. Generation of the file in INI format showing the current configuration

To export the current configuration, simply click on "Export Groups Configuration" and specify where you want to save the file in INI format.

Optionally, before proceeding, you can uncheck the "Include instructions in the exported file (as comments)" checkbox. However, it is advisable not to remove it, at least the first few times, so as to have useful information directly in the file that you are going to edit.

#### 2. Edit the exported INI file

The file exported in the previous step is divided into 3 sections:

- a) **[GROUPS]**: contains the definitions of the NLM Groups. These are the workgroups to which you will assign licenses
- b) **[TOKENS]**: contains the list of tokens registered on the server (the serial numbers, those starting with NLM...) and the groups they belong to
- c) **[BADGES]**: contains the definitions of the Badges. The badges are the codes to be activated on the individual workstations, which will thus be assigned to the work groups.

##### [GROUPS]

To create a group, insert a line in the [GROUPS] section in the following format:

<group index>=<group name>

<group index> is an integer between 1 and 63 (inclusive). NOTE: Each group must have a unique index.

<group name> is an alphanumeric string that gives a name to the group. Avoid using characters like ";" or "#" which usually indicate comments in these file types.

## [TOKENS]

To associate a token with an NLM, proceed as follows:

1. In the [TOKENS] section, locate the row for the token in question.
2. Specify the NLM Group index after the "=" sign in the located line.

If the token is associated with more than one group (i.e. it can be used by multiple groups), specify the indexes of the groups it belongs to, separated by a comma.

To indicate that a token can also be used by users without a Badge, associate the token to the group with index 0.

## [BADGES]

To create a Badge you need to add a row in the [BADGES] section in the following format:

`<badge>=<groups>`

`<badge>` is an alphanumeric string (without spaces).

`<groups>` is the comma-separated list of group indexes.

*NOTE: <groups> cannot contain the index of Group 0, as 0 is reserved for those who do not have a badge*

### 3. Importing the modified configuration

Click on "Import Groups Configuration" and specify the file in INI format containing the updated configuration.

## Client Configuration

Important: carry out the following operations with progeCAD closed.

Open the Badge Editor by clicking on "Set Badge" in progeCAD Center -> Settings.

Select the "Set Badge" option in the BadgeEditor window and specify the Badge in the text box.

Finally, press "OK" to confirm the Badge.

From now on, progeCAD can only take the licenses belonging to the Groups to which the specified Badge is associated.

With this same tool, it is obviously also possible to remove the inserted badge.

## Examples

To clarify what has been explained, some examples are reported.

### Case #1:

You want to reserve two licenses for the exclusive use of a company area. All the others can be freely used.

```
[GROUPS]
0=Without Badge
1=Meeting room

[TOKENS]
NLMxxxxxx:xxxxxxx:xxxxxxxA=1
NLMxxxxxx:xxxxxxx:xxxxxxxB=1
NLMxxxxxx:xxxxxxx:xxxxxxxC=0
NLMxxxxxx:xxxxxxx:xxxxxxxD=0
NLMxxxxxx:xxxxxxx:xxxxxxxE=0
NLMxxxxxx:xxxxxxx:xxxxxxxF=0
NLMxxxxxx:xxxxxxx:xxxxxxxG=0
NLMxxxxxx:xxxxxxx:xxxxxxxH=0
NLMxxxxxx:xxxxxxx:xxxxxxxI=0

[BADGE]
xxxxxxA=1
```

This configuration enables the PC in which Badge xxxxxxA has been inserted to use the NLM...A and NLM...B licenses exclusively. All the others can only be used from PC without a badge.

NOTE 1: The workstations in the meeting room can ONLY use the NLM...A and NLM...B licenses.

NOTE 2: There can be more than two PC in the meeting room, all with the same Badge inserted.

NOTE 3: To simplify the badge it has been called xxxxxxA, obviously to avoid "fraud" it is better to use a more complex sequence, such as AL24XLRA.

## Case #2

You want to reserve two licenses for the exclusive use of a company area which will also be able to use the other licenses used by PC without a Badge.

```
[GROUPS]
0=Without Badge
1=Meeting room

[TOKENS]
NLMxxxxxx:xxxxxxxx:xxxxxxxA=1
NLMxxxxxx:xxxxxxxx:xxxxxxxB=1
NLMxxxxxx:xxxxxxxx:xxxxxxxC=0,1
NLMxxxxxx:xxxxxxxx:xxxxxxxD=0,1
NLMxxxxxx:xxxxxxxx:xxxxxxxE=0,1
NLMxxxxxx:xxxxxxxx:xxxxxxxF=0,1
NLMxxxxxx:xxxxxxxx:xxxxxxG=0,1
NLMxxxxxx:xxxxxxxx:xxxxxxH=0,1
NLMxxxxxx:xxxxxxxx:xxxxxxI=0,1

[BADGE]
xxxxxxA=1
```

The above configuration allows only the PC in which the xxxxxxA Badge has been inserted to use the NLM...A and NLM...B licenses, while the remaining licenses can be used both by the PC in the meeting room and by those without the Badge.



Case #3:

You want to split the licenses among three distinct workgroups. Each group will only have access to one set of licenses.

```
[GROUPS]
0=Without Badge
1=Group A
2=Group B
3=Group C

[TOKENS]
NLMxxxxxx:xxxxxxxx:xxxxxxxA=1
NLMxxxxxx:xxxxxxxx:xxxxxxxB=1
NLMxxxxxx:xxxxxxxx:xxxxxxxC=1
NLMxxxxxx:xxxxxxxx:xxxxxxxD=2
NLMxxxxxx:xxxxxxxx:xxxxxxxE=2
NLMxxxxxx:xxxxxxxx:xxxxxxxF=2
NLMxxxxxx:xxxxxxxx:xxxxxxxG=3
NLMxxxxxx:xxxxxxxx:xxxxxxxH=3
NLMxxxxxx:xxxxxxxx:xxxxxxxI=3

[BADGE]
xxxxxxA=1
xxxxxxB=2
xxxxxxC=3
```

In the configuration shown above, each workgroup will be able to take advantage of a set of distinct licenses. The PCs of Group A, in which the Badge xxxxxA has been inserted, will be able to use ONLY and exclusively the NLM...A, NLM...B and NLM...C licenses, while the PCs of Group B, in which Once the xxxxxB Badge has been inserted, they will be able to use ONLY and exclusively the NLM...D, NLM...E and NLM...F licenses. Similarly, the PCs in which the Badge xxxxxC has been inserted, belonging to Group C, will be able to use ONLY and exclusively the NLM...G, NLM...H and NLM...I licenses. In this way, each group can be sure of having three licenses available to use at the same time from the relative workstations.

Case #4:

Each user is assigned a license to which he will have access thanks to a badge for personal use. Group and badges will be on a one-to-one basis.

```
[GROUPS]
0=Without Badge
1=User 1
2=User 2
3=User 3
4=User 4
5=User 5
6=User 6
7=User 7
8=User 8
9=User 9

[TOKENS]
NLMxxxxxx:xxxxxxxx:xxxxxxxA=1
NLMxxxxxx:xxxxxxxx:xxxxxxxB=2
NLMxxxxxx:xxxxxxxx:xxxxxxxC=3
NLMxxxxxx:xxxxxxxx:xxxxxxxD=4
NLMxxxxxx:xxxxxxxx:xxxxxxxE=5
NLMxxxxxx:xxxxxxxx:xxxxxxxF=6
NLMxxxxxx:xxxxxxxx:xxxxxxG=7
NLMxxxxxx:xxxxxxxx:xxxxxxH=8
NLMxxxxxx:xxxxxxxx:xxxxxxI=9

[BADGE]
xxxxxA=1
xxxxxB=2
xxxxxC=3
xxxxxD=4
xxxxxE=5
xxxxxF=6
xxxxxG=7
xxxxxH=8
xxxxxI=9
```

This configuration allows you to have greater control over the assignment of licenses. A workstation in which a Badge has been inserted among those defined in the [BADGE] section will be able to use one and ONLY one license. Obviously the user could have several computers on which he inserts his badge. In this case, he will still use only one progeCAD, but from the desired workstation knowing that he will always have his reserved license at his disposal.

Case #5:

Each user is assigned a license to which he will have access thanks to a badge for personal use. In addition, the "Manager" will have a Badge with which he will be able to use all the licenses.

```
[GROUPS]
0=Without Badge
1=User 1
2=User 2
3=User 3
4=User 4
5=User 5
6=User 6
7=User 7
8=User 8
9=User 9
10=Manager

[TOKENS]
NLMxxxxxx:xxxxxxx:xxxxxxxA=1,10
NLMxxxxxx:xxxxxxx:xxxxxxxB=2,10
NLMxxxxxx:xxxxxxx:xxxxxxxC=3,10
NLMxxxxxx:xxxxxxx:xxxxxxxD=4,10
NLMxxxxxx:xxxxxxx:xxxxxxxE=5,10
NLMxxxxxx:xxxxxxx:xxxxxxxF=6,10
NLMxxxxxx:xxxxxxx:xxxxxxxG=7,10
NLMxxxxxx:xxxxxxx:xxxxxxxH=8,10
NLMxxxxxx:xxxxxxx:xxxxxxxI=9,10

[BADGE]
xxxxxA=1
xxxxxB=2
xxxxxC=3
xxxxxD=4
xxxxxE=5
xxxxxF=6
xxxxxG=7
xxxxxH=8
xxxxxI=9
xxxxxMAN=10
```

This configuration enables the "Manager" PCs, where the xxxxxxMAN Badge has been inserted, to be able to use all the licenses listed in the [TOKENS] section. Similarly to the previous case, individual users will only be able to use the license associated with the Badge that has been inserted in their workstation.