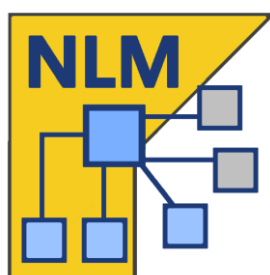




proge**CAD**



**progeCAD NLM**

# **User Guide**

Rel. 21.1

# Table of Contents

<b>Table of Contents .....</b>	<b>2</b>
<b>Introduction .....</b>	<b>3</b>
<b>How to start .....</b>	<b>3</b>
progeCAD NLM Server Installation .....	3
progeCAD NLM Server Registration .....	3
License Addition and Activation .....	4
progeCAD Installation and Usage .....	4
How to obtain a Take-Away License.....	4
Server control from other PC .....	5
<b>Server Management and Configuration Change .....</b>	<b>5</b>
Access to Administration Panel .....	5
Administration Panel .....	5
Licenses Manager .....	6
Not active licenses.....	6
Server settings .....	7
TakeAway settings.....	8
RegData .....	9
Misc .....	9
<b>Migrating NLM Server .....</b>	<b>10</b>
<b>Proxy configuration.....</b>	<b>10</b>

## Introduction

The progeCAD NLM version (Network License Manager) allows to run concurrently a number of progeCAD copies corresponding to the number of purchased licenses on various workstations within the same network (LAN or Internet\*).

The NLM version consists of two parts:

- **progeCAD** clients, that can be installed on the unlimited number of workstations. The maximum number of progeCAD copies for concurrent use corresponds to the number of purchased licenses.
- The **NLM Server** software, that can be installed on any PC of the network, including progeCAD workstations. NLM Server manages licenses and assigns them to the users who want to use progeCAD. **It is recommended to install NLM Server on a PC with Internet access** for further registration and activation of licenses.

**Notice that you need only one installation of NLM Server to set your progeCAD network environment and manage your NLM licenses.**

NLM Server, lacking GUI, can be monitored and managed from any PC on the network via the NLM Monitor software (included in the NLM Server Installation).

The NLM Server Management provides the possibility to add new purchased licenses, remove licenses or monitor their state (availability, the user who works with the software, expiration, etc).

progeCAD users working within the network can immediately obtain a license from the Server to work with the software as long as it is required, or they can request a Take-Away license that will allow them to work on a workstation out of the network for a period of time (up to 30 days maximum).

*Note: Each Take-Away license reduces the number of licenses available on the network by one for the Take-Away license duration period or till the moment of the license release.*

*\*To be used through Internet. It's required to set up port forwarding on your firewall*

## How to start

### progeCAD NLM Server Installation

To install NLM Server, start the file *nlmserverproeng.exe* on a network PC reachable by all the PCs where progeCAD is going to be used, and follow the guided procedure of NLM Server installation.

### progeCAD NLM Server Registration

NLM Server must be registered before its use. The NLM Monitor, installed together with NLM Server, is automatically launched at the end of the installation procedure. Otherwise you can launch NLM Monitor either from the Start menu or by clicking the Icon created on Desktop. Once opened, NLM Monitor connects to NLM Server and prompts to complete registration. Pressing the *OK* button, the NLM Server Registration Form shows up. When the form is filled out, press the *Activate* button, the program tries to proceed to Live registration, that is a quick registration via Internet. In case your PC is not connected to

the Internet, it will be necessary to proceed with the e-mail registration method following the instructions of the guided procedure.

## License Addition and Activation

When the Server has been registered, a dialog box shows up allowing to activate purchased licenses (see figure on the side).

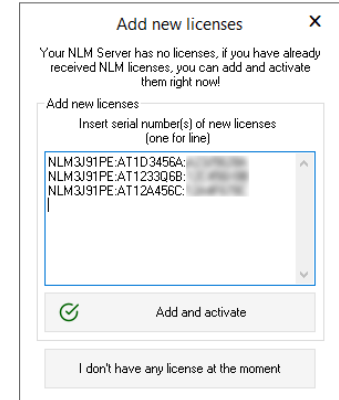
Every license has its own serial number starting with “NLM”.

If you already have license serial numbers, insert these serial numbers in the dialog box and press *Add and Activate*.

The activation method is similar to the Server registration method (Live when there is Internet access, otherwise via e-mail).

*You can also add and activate licenses at a later date by Administrate the server button -> Licenses manager tab -> Add new licenses. See [Licenses Manager](#) section for more details.*

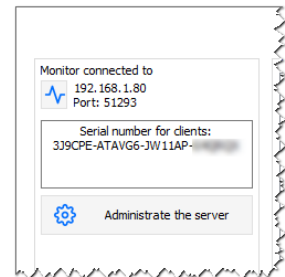
Once licenses are added and activated, the Server is ready for use!



## progeCAD Installation and Usage

Install progeCAD on all the PCs where you are going to use the software and perform software registration. This operation consists of the following steps:

- Choose *Register* in the dialog box that shows up on progeCAD start.
- Insert the serial number that was assigned to NLM Server during the NLM Server registration. This number can be retrieved at any time through NLM Monitor, where it is displayed in the upper left corner of the window (see figure on the side). If the client's automatic configuration is enabled through NLM Server, this step can be omitted by accepting the server prompt that shows up during this procedure.
- Complete the activation by filling out the proposed form.
- Once registered, progeCAD is ready for use. The software asks for the IP address of the PC where NLM Server is installed and for the clients port, if these data are not detected automatically. If the procedure has been carried out correctly, progeCAD will make a license request to NLM Server. After verification of a license availability, NLM Server will assign the license allowing to start the software.



If you have to set up multiple clients, it may be useful to use the regdata.dat facility (available only from version 2019 onward). For details see [Regdata](#) section.

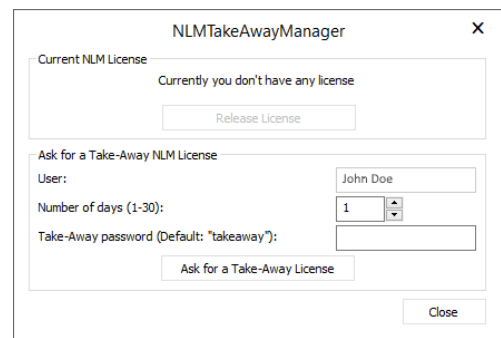
*To learn the IP address of the server, execute the command **ipconfig** from the command line prompt on the computer with NLM Server.*

## How to obtain a Take-Away License


You are not limited to work solely connected to NLM Server. You are able to take a license out of the network to work for some period of time disconnected from NLM Server. This type of license is called a Take-Away license.

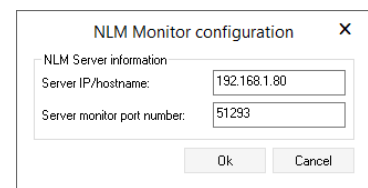
To get a Take-Away license, launch the program *NLM TakeAway* that you can find in progeCAD Center available from the Start Menu on the client computer. Go to *Utility -> NLM TakeAway*. At the top of the window you can see your license current status (no license/connected to the server/Take-Away license). If you already have a Take-Away license and you are connected to the server, you can release the license before its expiration.

If you are connected to the server, you can obtain a Take-Away license, by choosing the number of days you want to work offline, and specifying the Take-Away password (set by your NLM Server Administrator).



## Server control from other PC

It is possible to monitor and control the server from any other PC on the same network. To do that, copy the NLMServerMonitor folder from the PC with NLM Server to the desired computer. Then run NLM Monitor and press the connection button . Indicate in the showed up dialog box the IP address of the PC where NLM Server is installed and the configured port to communicate with Monitors.



# Server Management and Configuration Change

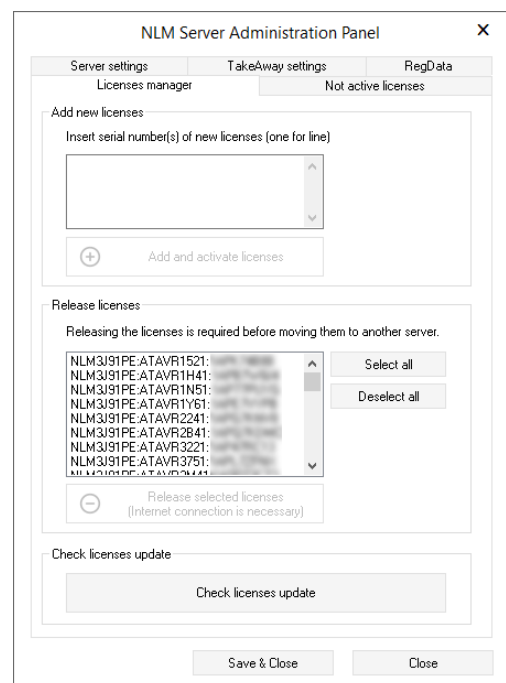
## Access to Administration Panel

Once NLM Monitor is connected to NLM Server, you can access Administration Panel pressing the *Administrate the Server* button and inserting the NLM Server Administration Password. Upon the NLM Server installation the default password is created. It is possible to change it later from Administration Panel.

If you forget the Administration Password, start NLM Monitor from the PC with NLM Server, making sure that in the NLM Monitor configurations the Server IP address is set to "127.0.0.1". Then connect to the server, press the *Administrate the Server* button and proceed to the default password re-setting.

## Administration Panel

Once the password has been inserted, the Administration Panel opens up offering five main tabs: **License Manager**, **Not active licenses**, **Server settings**, **TakeAway settings** and **RegData**.

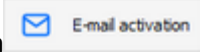


## Licenses Manager

The License Manager dialog box offers the following operations:

- **Add new licenses**

To add new licenses, insert the serial numbers of your purchased new licenses in the relative field (one serial number per line), then press the *Add and Activate Licenses* button. If there is an Internet connection, the Server will add new licenses and will proceed to their immediate activation.

In the absence of an internet connection, please proceed by e-mail following the instructions of the guided procedure. After sending an email, you receive an automated reply with an activation file attached. Press the *E-Mail Activation* button , a dialog box shows up, select the file you've received by e-mail and complete the activation process.

- **Release Active Licenses**

In this box you will find active licenses currently not in use and available for the Release procedure. This procedure is necessary when you need to re-activate licenses on another Server.

Note: To release licenses correctly, the Server must be connected to the Internet. This procedure cannot be performed via email.

If no Internet access is available, you will be able to continue the licenses release procedure, however, these licenses will be simply removed from the server, and NOT released.

- **Check licenses update**

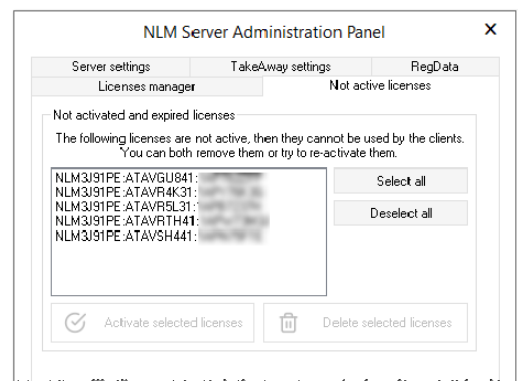
Check if the licenses are eligible to be updated to a newer version (for example due to an iCARE subscription). If they are, they are automatically updated to the new version. An internet connection is required.

## Not active licenses

- **Not activated and expired licenses**

This box lists licenses that cannot be used by clients because of their status (expired and/or not active). You can try to activate these licenses: select all licenses or some of them (according to your needs) and press the *Activate Selected Licenses* button. If the Server finds Internet connection, it will immediately proceed to the automatic activation, otherwise you will be prompted to proceed with the e-mail activation.

You can remove from this list non-activated or expired licenses, by selecting and pressing the *Delete selected licenses* button.



## Server settings

The NLM Server Settings dialog box allows to control and modify all the options and settings relating to the NLM Server functionalities, among which:

- **Clients Port Number**


The port that NLM Server uses for communication with network clients. If a port number gets changed and there are users connected to the server then these users will become disconnected and will have to insert a new port number in their settings to continue working with the software.

If the port number change fails (for example, it is already used by some other program), NLM Server gets back to the old port number.

- **Monitor Port Number**

The port that NLM Server uses for communication with network Monitors. If a Monitor Port Number gets changed, all the Monitors connected to the server will become disconnected and you will need to configure a new port number.

If the port number change fails (for example, it is already used by some other program), NLM Server gets back to the old port number.

The Monitor with the changed port number automatically sets a new value in its configuration. So when the change of a port is successful, you simply press the connection button  to be connected to the server using a new port. However, the port number on all the other Monitors need to be changed manually.

Note: If it is not possible to establish a connection to the server, it is likely that the server failed to start a connection using a new port and reset the previous value.

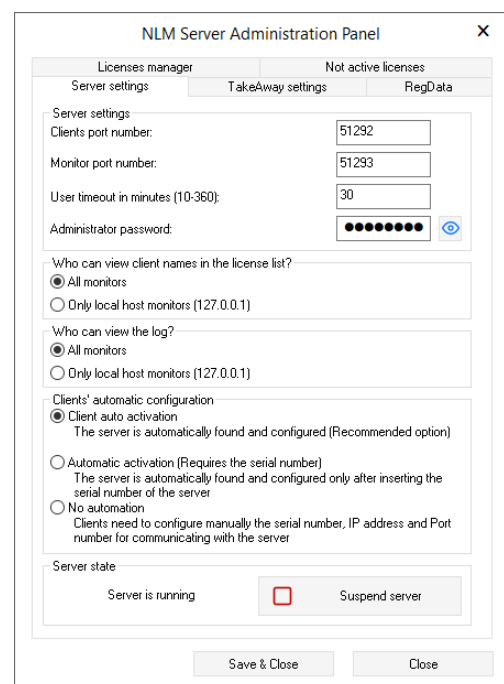
In this case you should indicate the old port number. All other Monitors do not need any modification. Another reason of the connection failure can be missing open port in the Firewall. NLM Server automatically opens the firewall ports during the setup. If ports are changed, this operation must be performed manually.

- **User Timeout in minutes**

Set a time limit (in minutes) which allows to maintain a license even when the system is idle (e.g. the user left progeCAD open without working with the software or a network failure occurred). During the Timeout period the user can work locally even without access to the Server. Even when the software is not in use, the license will be maintained for the whole Timeout period. The higher timeout value, the stabler the work of users (they can work longer in case of net malfunctioning and their license is preserved when they take breaks, yet it reduces flexibility (if a user has no way to release his license due to a network failure or simply doesn't release it leaving the software open, the license won't return to the Server and no other user will be able to take this license).

- **Administrator Password**

The password to access the Administration Panel.



Attention! When changing your password, you are not prompted for confirmation of a newly inserted password, so it is strongly recommended, before saving your new settings, to verify if your new password corresponds to the one you intended, by pressing the *Show/Hide* button for its visualization.

- **Who can view Client Names in the License List?**

If you select the *All Monitors* option, all Monitors will be able to see Names and IPs of those users who possess the corresponding licenses.

With the *Only Local Host Monitors* option the users' names and IPs will be hidden to all Monitors, except the one Monitor which is started on the PC with the Server and connected to the Server with the localhost address (127.0.0.1).

- **Who can view the log?**

If you select the *All Monitors* option, all Monitors will be able to see an access log.

With the *Only Local Host Monitors* option, the access log information will be seen only by the Monitor started on a PC with the Server and connected to the Server with the localhost address (127.0.0.1). No other Monitor will have access to this information.

- **Clients' automatic activation**

- *Client auto activation*

Within a local network, at the moment of activation clients send a broadcast message to locate the NLM Server. If found, they automatically configure themselves.

- *Automatic activation (Requires the serial number)*

Like the above configuration, clients are automatically configured, but the server serial number is requested to start the activation process

- *No automation*

Serial number, IP and Port must be inserted manually to perform the client activation.

Note: for both *Client auto activation* and *Automatic activation*, broadcast messages must be enabled on your local network.

- **Start Server / Suspend Server**

The command to start or suspend the Server. As far as Users are concerned, to suspend the Server is equivalent to switch it off. All Users will be disconnected, and the Server will stop functioning on the clients port, becoming inaccessible (the users who were connected will be able to continue working even without Server for a period of time set by Timeout); as far as Monitors are concerned, nothing will be changed and they will continue functioning in the same mode.

## TakeAway settings

- **Minimum License Span in days**

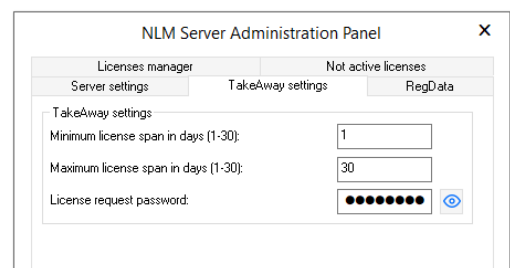
The minimum number of days for granting a TakeAway license

- **Maximum License Span in days**

The maximum number of days for granting a TakeAway license

- **License Request Password**

The password necessary to obtain a TakeAway license from the Server.

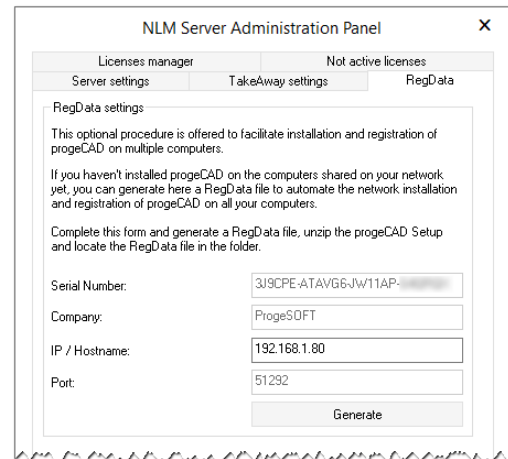




## RegData

***(This option is available only from progeCAD 2019 onward)***

The RegData tab of the Administration Panel allows you to generate a file (regdata.dat) that facilitates installation and activation of progeCAD when dealing with multiple clients set up. Indicate the IP of the machine where NLM Server is installed (it must be an IP reachable from all the clients workstations) and click the Generate button. Locate the regdata.dat file together with the setup files in a shared folder, access that folder from every workstation where you want to install progeCAD and run the setup. After installation, progeCAD will be automatically activated to work with NLM Licenses tied to that server.



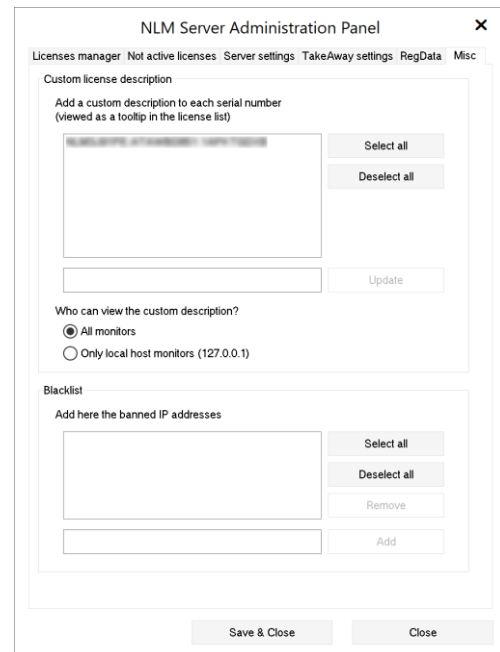
The screenshot shows the 'RegData' tab in the 'NLM Server Administration Panel'. It contains the following fields and buttons:

- Serial Number: 3J9CPE-ATAVG6-JW11AP
- Company: ProgeSDFT
- IP / Hostname: 192.168.1.80
- Port: 51292
- Generate button

Text in the panel: "RegData settings: This optional procedure is offered to facilitate installation and registration of progeCAD on multiple computers. If you haven't installed progeCAD on the computers shared on your network yet, you can generate here a RegData file to automate the network installation and registration of progeCAD on all your computers. Complete this form and generate a RegData file, unzip the progeCAD Setup and locate the RegData file in the folder."

## Misc

The Misc Tab includes a couple of features that sometimes may be handy. In the "Custom license description" section you can add some text to a serial number that will be displayed as a tooltip when you hover the cursor over that serial number in the NLM Server Monitor. You may choose if to display this comment to anyone or only to those who have access to the server (usually the Administrator). To add a comment, put the text in the lower text input box and press the "Update" button on the right. If, for any reason, you don't want some progeCAD copy to have access to licenses, you can block the IP of the machine where this progeCAD copy is located. Once IP is blocked, the progeCAD copy on that computer won't be able to take licenses. To block an IP, go to the Blacklist section and type this IP in the lower text input box, then press the "Add" button.



The screenshot shows the 'Misc' tab in the 'NLM Server Administration Panel'. It contains the following sections and controls:

- Custom license description:**
  - Text input box for description
  - Select all / Deselect all buttons
  - Update button
  - Who can view the custom description?
    - All monitors
    - Only local host monitors (127.0.0.1)
- Blacklist:**
  - Text input box for IP address
  - Select all / Deselect all buttons
  - Remove / Add buttons
- Save & Close / Close buttons at the bottom.

## Migrating NLM Server

If you need to move NLM Server, first of all, connect to NLM Server and make sure to release all available NLM licenses:

- In NLM Monitor, click the button *Administrate the Server* to open NLM Server Administration Panel
- In Administration Panel under the tab *License Manager > Release licenses*, select all available NLM licences by pressing the button *Select All*
- Press the *Release selected licenses* button. An Internet connection is required

Now you can proceed to NLM Server transfer:

- Uninstall NLM Server
- Reinstall NLM Server on a new machine, activate NLM Server and NLM licenses as if you were doing it for the first time, following the same procedure.
- Repeat registration for all Clients by going to progeCAD Center > Register progeCAD. If the Server is located on the same LAN network and the automated registration procedure option is enabled, the registration process will be through in few clicks.

If the automated registration procedure option is disabled, during the registration procedure you will be prompted to indicate the new serial number associated with NLM Server. On progeCAD start, not finding the old IP address and Port number (progeCAD stores the previous IP and Port), the program will ask for a new IP address. These data, IP address and Port number, can be changed at any moment from progeCAD Center -> Utility -> NLM Settings.

## Proxy configuration

If your NLMServer software runs on a PC/Server that accesses the Internet through a proxy, you should configure NLMServer to be able to use it. It is enough to create a plain text file, named `proxy.cfg`, which will contain four lines. The text file must contain the following pieces of information, one piece of information per line: Proxy User, Proxy Password, Proxy IP, Proxy Password.

The example of a `proxy.cfg` file:

```
PROXYUSER123
PROXYPWD314
192.168.1.200
8080
```

This file must be located in the main program folder, usually `C:\Program Files (x86)\PSOFT\progeCAD NLM Server Professional ENG`

**IMPORTANT:** Although NLMServer doesn't require the Internet for functioning, if Internet connection is available, it will speed up the activation/upgrade of your licenses. The Internet is also required in case of migration of the server, when you want to release the activated license(s) without having to contact the ProgeSOFT support team.